

# Curriculum Feedback Analysis

## (A) Stakeholder: Student

### Student Feedback Analysis 2023-24

TOTAL NUMBER OF RESPONSES : 2283					NPS Threshold: 78		
		A	B	C	D	E	Net Promoter Score NPS
		Promoters		Passives	Detractors		
S.No.	Attributes	No. of Responses strongly agreed	No. of Responses agreed	No. of Responses neutral	No. of Responses disagreed	No. of Responses strongly disagreed	
1	There are relevant courses offered by the Programme.	1105	778	319	40	41	78.93
2	Did the Course content was relevant enough to offer employment opportunities?	1151	746	273	83	30	78.14
3	Course Syllabi developed relevant technical skills and inspired curiosity and innovative thinking.	1248	661	261	69	44	78.67
4	Allocation of Credit hours to each of the Courses are adequate.	1173	745	253	89	23	79.11
5	Listed Course text book / Reference book are relevant and adequate.	1181	776	214	81	31	79.37
6	Each course objective and course learning outcomes are defined and developed.	1236	653	291	67	36	78.23
7	Whether assessment is well design for all Courses ?	1175	741	238	85	44	78.27
8	Career advancement and holistic learning are enhanced by Programme Curriculum.	1189	696	304	63	31	78.45
9	Multi-disciplinary learning is fostered in	1148	781	253	69	32	80.07

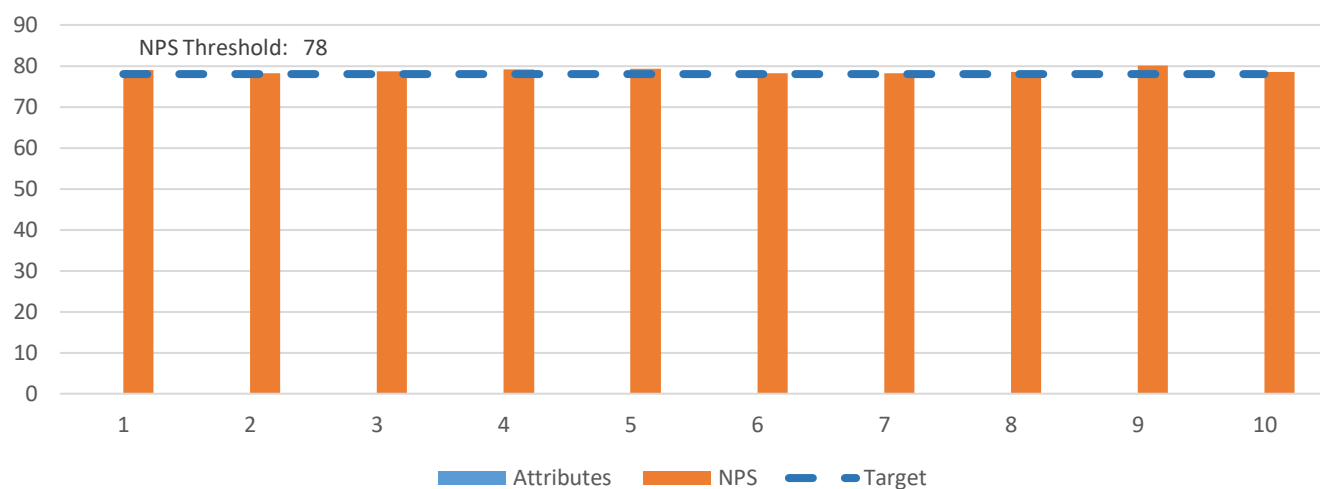
**SRM UNIVERSITY DELHI-NCR, SONEPAT**

Established under Haryana Private Universities Act 2006 as amended by Act no.8 of 2013 and recognized by UGC u/s 2(f) of UGC Act, 1956

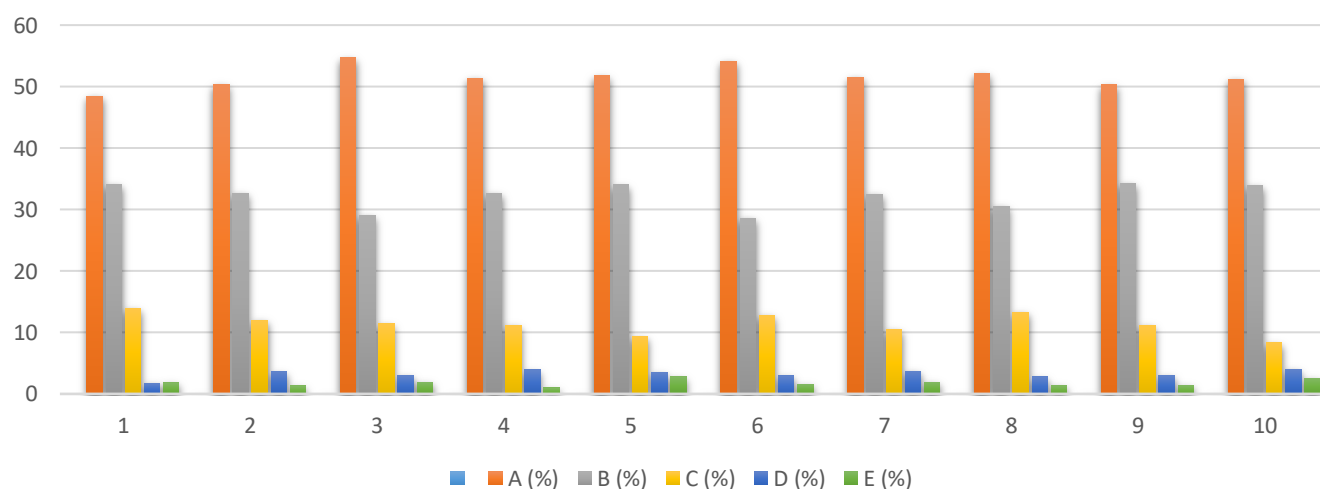
39, Rajiv Gandhi Education City, Delhi-NCR, Sonapat-131029, Haryana (India)  
 Tel : 0130-2203700-01 | Tollfree : 1800 180 1216 | Website : [www.srmuniversity.ac.in](http://www.srmuniversity.ac.in)

	Programme Curriculum.						
10	Course Syllabi ensure Real life applications as well as theoretical conceptual understanding	1169	773	190	92	59	78.45

### NPS Score Chart



### Percentage Chart



## SRM UNIVERSITY DELHI-NCR, SONEPAT

Established under Haryana Private Universities Act 2006 as amended by Act no.8 of 2013 and recognized by UGC u/s 2(f) of UGC Act, 1956

39, Rajiv Gandhi Education City, Delhi-NCR, Sonapat-131029, Haryana (India)  
Tel : 0130-2203700-01 | Tollfree : 1800 180 1216 | Website : [www.srmuniversity.ac.in](http://www.srmuniversity.ac.in)



## (B) Stakeholder: Faculty

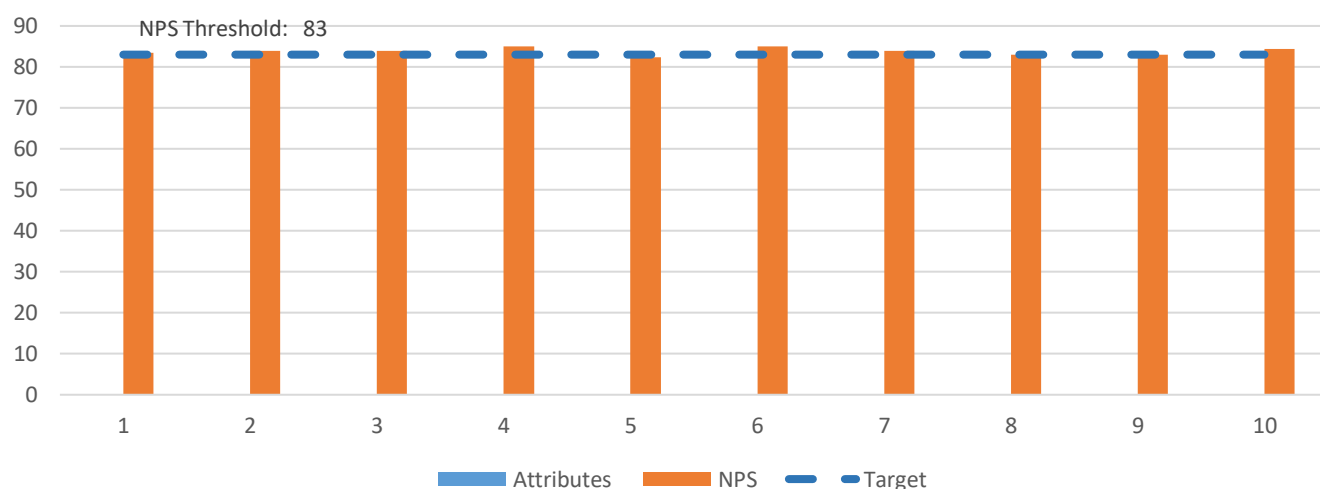
### Faculty Feedback Analysis 2023-24

TOTAL NUMBER OF RESPONSES:193				NPS Threshold: 83			
S.No.	Attributes	A	B	C	D	E	Net Promoter Score (NPS)
		Promoters		Passives	Detractors		
		No. of Response s strongly agreed	No. of Response s agreed	No. of Response s neutral	No. of Response s disagreed	No. of Response s strongly disagreed	
1	The course content designed is relevant to the needs of industry.	98	69	20	4	2	83.42
2	The course content has enough scope for development of analytical, logical and critical thinking.	94	74	19	5	1	83.94
3	The Curriculum gives wide range of electives under Choice Based Credit System.	88	77	25	2	1	83.94
4	Programme learning outcomes are achieved through various courses included in the Programme.	93	74	23	2	1	84.97
5	There is an adequate number of reference reading material and e – resource available under various courses.	91	76	18	5	3	82.38
6	The assessment parameters effectively measure the performance of the students and areas for improvement under each course.	87	81	21	3	1	84.97
7	The programme curriculums facilitate multidisciplinary learning.	91	74	25	2	1	83.94
8	There is adequate academic freedom and opportunities available for designing, developing, and improving curriculum and evaluation parameters.	96	70	21	4	2	82.90

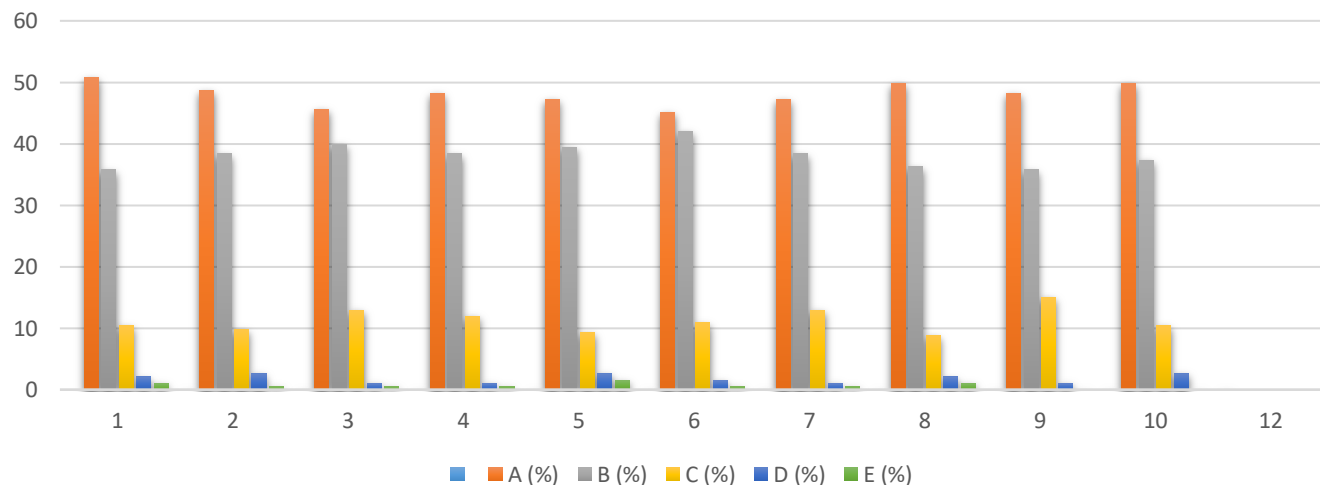


9	The University has enough resources at disposal for effective delivery of programme curriculums (computer Labs, Projector, Laptops, Online Resources etc).	93	69	29	2	0	82.90
10	Learning through experience and lifelong learning is an integral part of the programme curriculum.	96	72	20	5	0	84.46

**NPS Score Chart**



**Percentage Chart**



## SRM UNIVERSITY DELHI-NCR, SONEPAT

Established under Haryana Private Universities Act 2006 as amended by Act no.8 of 2013 and recognized by UGC u/s 2(f) of UGC Act, 1956

39, Rajiv Gandhi Education City, Delhi-NCR, Sonapat-131029, Haryana (India)  
Tel : 0130-2203700-01 | Tollfree : 1800 180 1216 | Website : [www.srmuniversity.ac.in](http://www.srmuniversity.ac.in)

## (C) Stakeholder: Alumni

### Alumni Feedback Analysis 2023-24

TOTAL NUMBER OF RESPONSES:362					NPS Threshold: 73		
		A	B	C	D	E	Net Promoter Score (NPS)
		Promoters		Passives	Detractors		
S.No.	Attributes	No. of Responses strongly agreed	No. of Responses agreed	No. of Responses neutral	No. of Responses disagreed	No. of Responses strongly disagreed	
1	The courses included in the curriculum have helped in the professional growth.	173	112	57	14	6	73.14
2	Programme curriculum was relevant to the industry.	162	129	51	13	7	74.78
3	Outcome-based education practice was implemented by the University.	196	87	60	15	4	72.88
4	The curriculum has enabled enhancement of performance at workplace.	177	102	69	9	5	73.15
5	The courses have benefited in improving employability skills.	149	128	75	7	3	73.72
6	The courses had a balance between applied, participatory, and experiential learning.	144	139	64	9	6	73.97
7	The domain specific knowledge gained during the programme helped in solving challenging problems at workplace.	183	95	76	6	2	74.56
8	The courses helped in development of analytical, critical, problem-solving abilities.	156	129	59	14	4	73.71
9	Sufficient opportunities were provided by the University during the programme for Participation in extra/co-	138	135	81	7	1	73.19

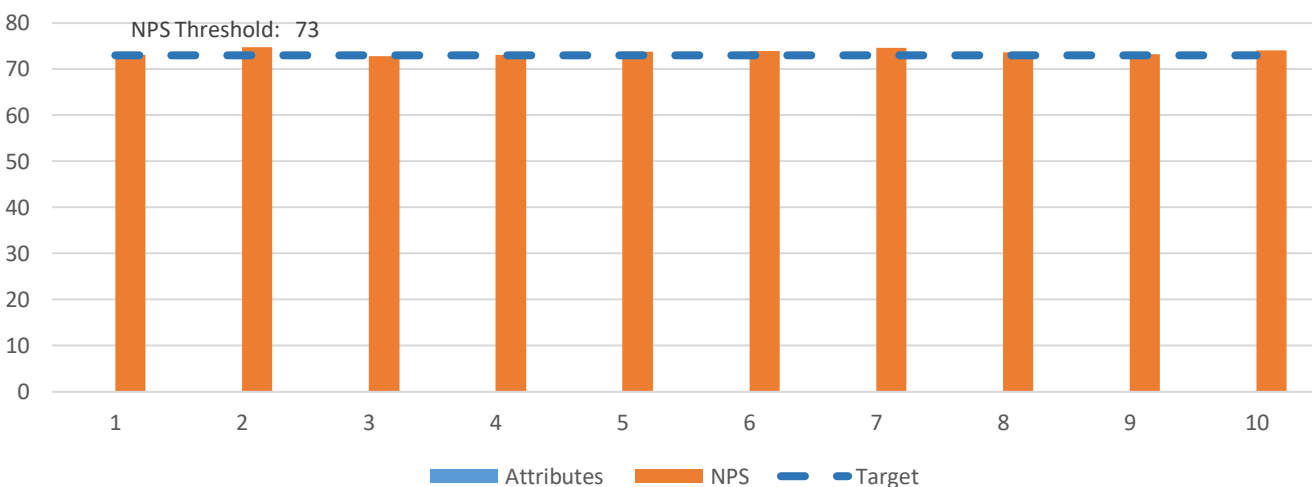
## SRM UNIVERSITY DELHI-NCR, SONEPAT

Established under Haryana Private Universities Act 2006 as amended by Act no.8 of 2013 and recognized by UGC u/s 2(f) of UGC Act, 1956

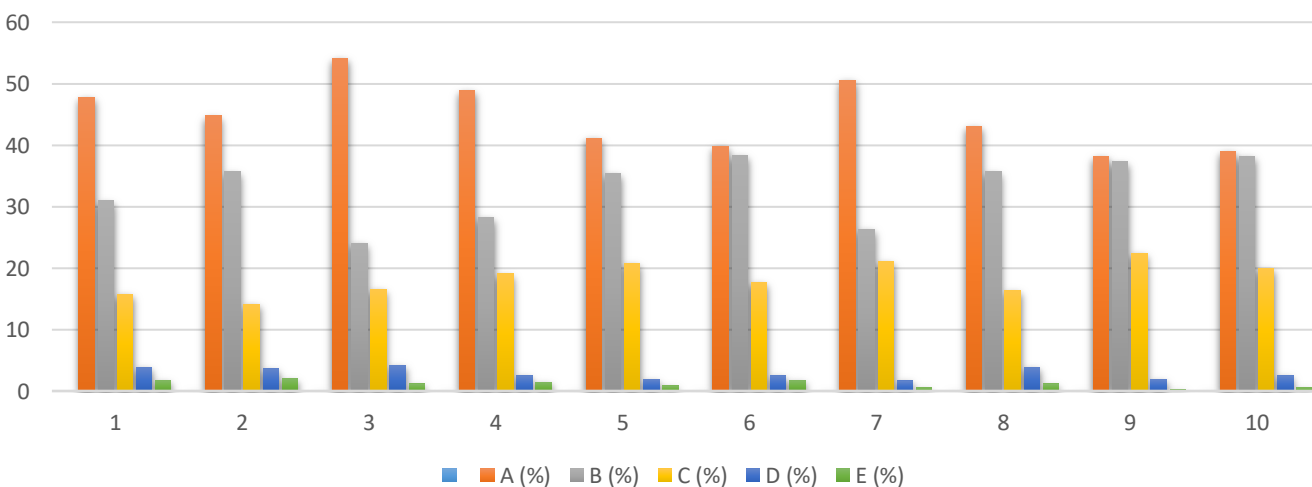
39, Rajiv Gandhi Education City, Delhi-NCR, Sonapat-131029, Haryana (India)  
 Tel : 0130-2203700-01 | Tollfree : 1800 180 1216 | Website : [www.srmuniversity.ac.in](http://www.srmuniversity.ac.in)

	curricular activities for holistic development.						
10	Teaching- learning environment at the University was remarkable.	141	138	72	9	2	74.01

### NPS Score Chart



### Percentage Chart



## SRM UNIVERSITY DELHI-NCR, SONEPAT

Established under Haryana Private Universities Act 2006 as amended by Act no.8 of 2013 and recognized by UGC u/s 2(f) of UGC Act, 1956

39, Rajiv Gandhi Education City, Delhi-NCR, Sonapat-131029, Haryana (India)  
Tel : 0130-2203700-01 | Tollfree : 1800 180 1216 | Website : [www.srmuniversity.ac.in](http://www.srmuniversity.ac.in)

## (D) Stakeholder: Employer

### Employer Feedback Analysis 2023-24

TOTAL NUMBER OF RESPONSES:183					NPS Threshold: 92		
		A	B	C	D	E	Net Promoter Score (NPS)
		Promoters		Passives	Detractors		
S.No.	Attributes	No. of Responses strongly agreed	No. of Responses agreed	No. of Responses neutral	No. of Responses disagreed	No. of Responses strongly disagreed	
1	How far the courses meet the requirements of the industry?	91	79	10	2	1	91.26
2	Are the students able to transfer skills from courses included in the Programme to work place?	106	67	7	3	0	92.90
3	Does the specialized curriculum help students to attain excellence in their career?	128	46	4	4	1	92.35
4	Do the students demonstrate enough soft skills and technical skills needed by the job?	98	73	11	1	0	92.90
5	Do the students demonstrate adequate critical thinking and problem-solving abilities?	146	29	2	4	2	92.35
6	How far the training and internship completed by the students help in understanding the roles and responsibilities of the work place?	126	47	7	2	1	92.90
7	The curriculum has a balance of discipline specific courses, basic sciences, Humanities, and Management courses.	133	38	10	2	0	92.11
8	Do the students demonstrate the adequate managerial / leadership qualities and professional ethics?	148	27	3	4	1	92.90

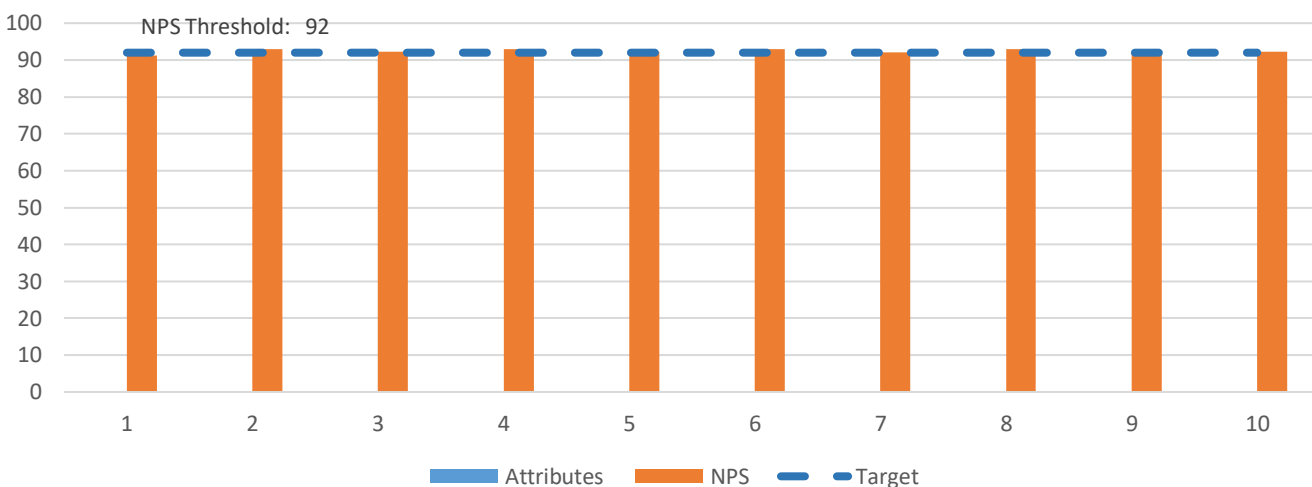
**SRM UNIVERSITY DELHI-NCR, SONEPAT**

Established under Haryana Private Universities Act 2006 as amended by Act no.8 of 2013 and recognized by UGC u/s 2(f) of UGC Act, 1956

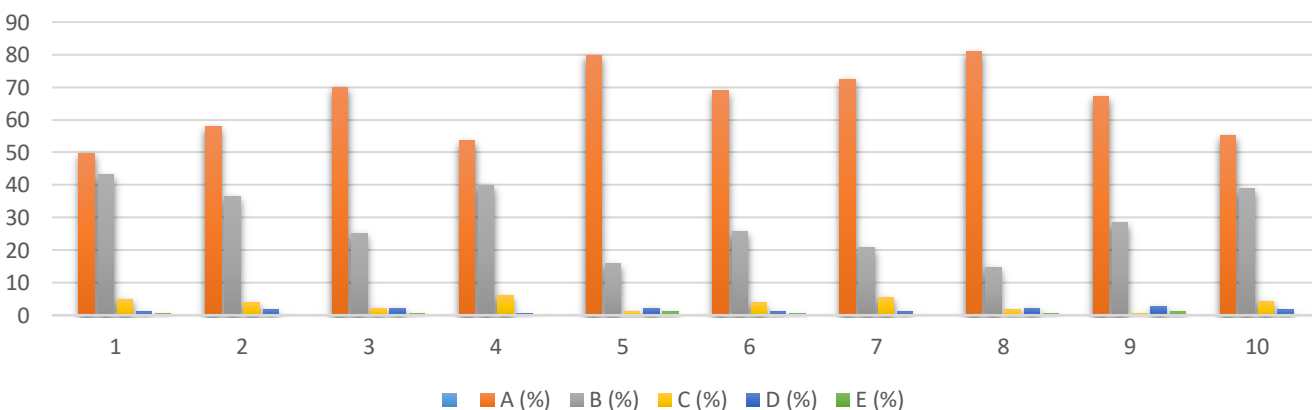
39, Rajiv Gandhi Education City, Delhi-NCR, Sonapat-131029, Haryana (India)  
 Tel : 0130-2203700-01 | Tollfree : 1800 180 1216 | Website : [www.srmuniversity.ac.in](http://www.srmuniversity.ac.in)

9	Do the students have the potential to engage in continuous learning and up gradation of their knowledge and skills?	123	52	1	5	2	91.80
10	Does the revised curriculum meet the emerging needs of the industry?	101	71	8	3	0	92.35

**NPS Score Chart**



**Percentage Chart**



## SRM UNIVERSITY DELHI-NCR, SONEPAT

Established under Haryana Private Universities Act 2006 as amended by Act no.8 of 2013 and recognized by UGC u/s 2(f) of UGC Act, 1956

39, Rajiv Gandhi Education City, Delhi-NCR, Sonapat-131029, Haryana (India)

Tel : 0130-2203700-01 | Tollfree : 1800 180 1216 | Website : [www.srmuniversity.ac.in](http://www.srmuniversity.ac.in)



## (E) Stakeholder: Parents

### Parents Feedback Analysis 2023-24

TOTAL NUMBER OF RESPONSES: 273					NPS Threshold: 78		
		A	B	C	D	E	Net Promoter Score (NPS)
		Promoters		Passives	Detractors		
S.No.	Attributes	No. of Responses strongly agreed	No. of Responses agreed	No. of Responses neutral	No. of Responses disagreed	No. of Responses strongly disagreed	
1	The infrastructural facilities (library, hostel, Sports) at the university are excellent.	132	96	38	6	1	80.95
2	The academic skills and knowledge of the faculty is satisfactory.	137	85	43	5	3	78.23
3	Sufficient resources both academic and nonacademic are available for the students.	146	93	16	12	6	80.95
4	The authorities are easily approachable for any queries and problems.	141	91	24	13	4	78.75
5	Extra-classes are provided to the learners on a requirement basis.	145	77	43	6	2	78.52
6	The students are given enough exposure as far as career-orientation is concerned.	133	92	33	12	3	76.92
7	The curriculum will make the learner employable and industry ready.	127	108	23	11	4	80.59
8	The university focuses on extra-curricular and sport activities and treats these as an essential part of holistic learning.	142	83	37	9	2	78.39

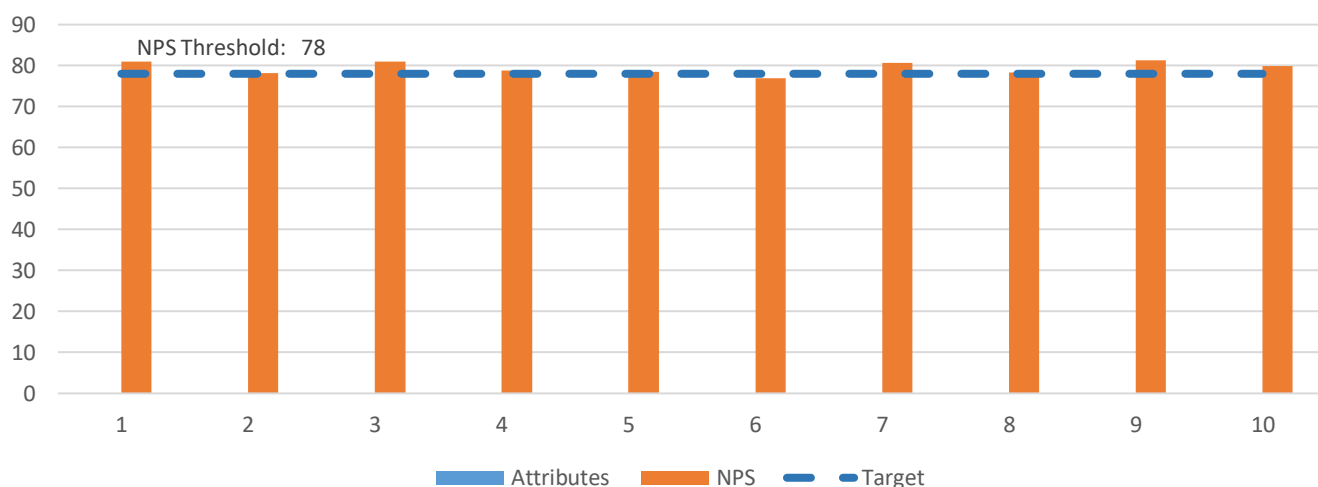
## SRM UNIVERSITY DELHI-NCR, SONEPAT

Established under Haryana Private Universities Act 2006 as amended by Act no.8 of 2013 and recognized by UGC u/s 2(f) of UGC Act, 1956

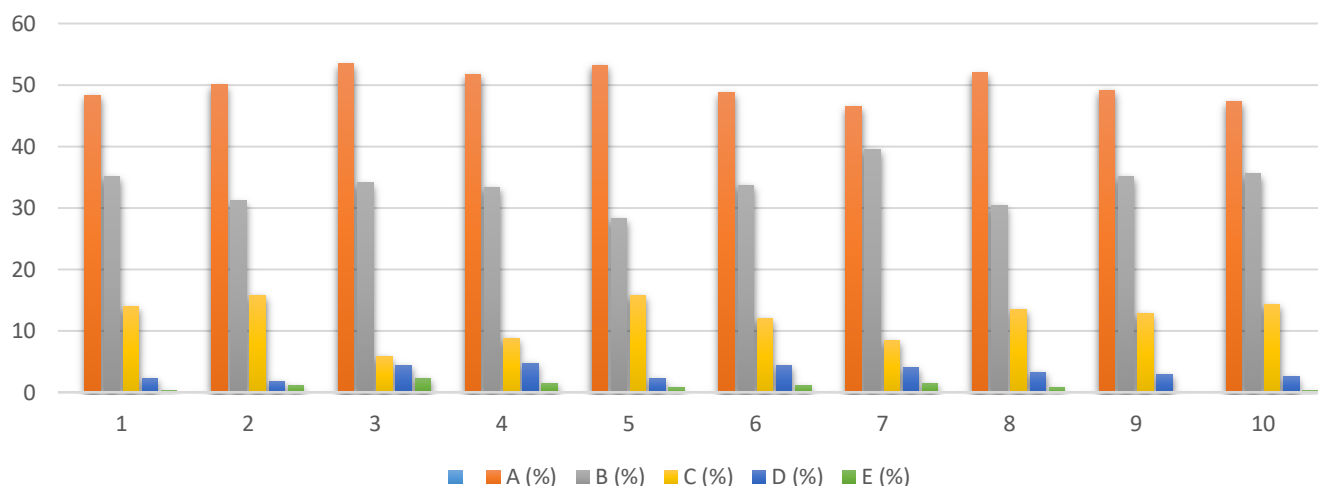
39, Rajiv Gandhi Education City, Delhi-NCR, Sonapat-131029, Haryana (India)  
 Tel : 0130-2203700-01 | Tollfree : 1800 180 1216 | Website : [www.srmuniversity.ac.in](http://www.srmuniversity.ac.in)

9	The university campus is a safe and secure place for learners.	134	96	35	8	0	81.32
10	There is a positive change in the behaviour of the learner after joining the university.	129	97	39	7	1	79.85

**NPS Score Chart**



**Percentage Chart**



## SRM UNIVERSITY DELHI-NCR, SONEPAT

Established under Haryana Private Universities Act 2006 as amended by Act no.8 of 2013 and recognized by UGC u/s 2(f) of UGC Act, 1956

39, Rajiv Gandhi Education City, Delhi-NCR, Sonapat-131029, Haryana (India)  
Tel : 0130-2203700-01 | Tollfree : 1800 180 1216 | Website : [www.srmuniversity.ac.in](http://www.srmuniversity.ac.in)